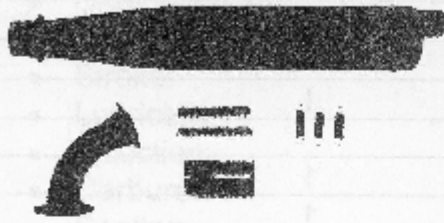
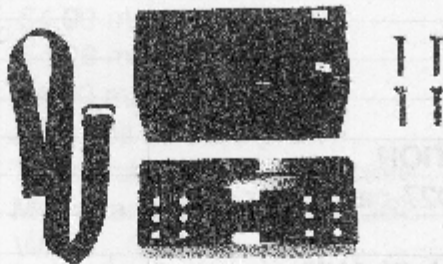


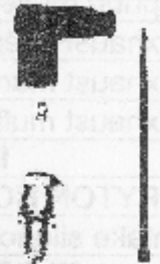
1.4 ACCESSORIES



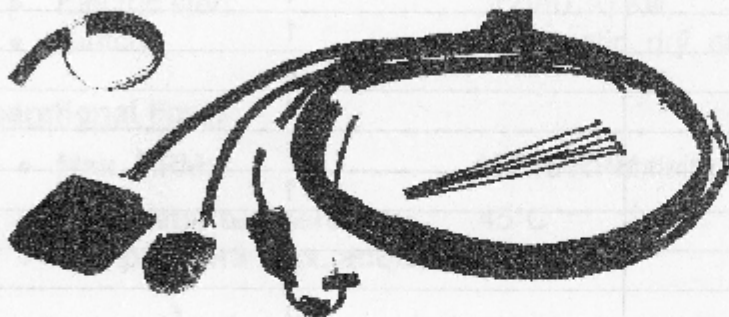
EXHAUST SYSTEM



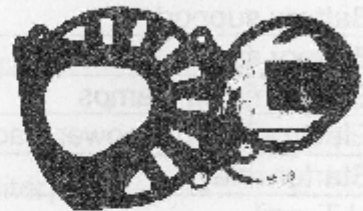
BATTERY WITH SUPPORT



NGK SPARK PLUG



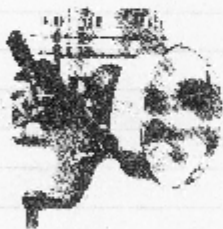
COMPLETE ELECTRIC ASSEMBLY



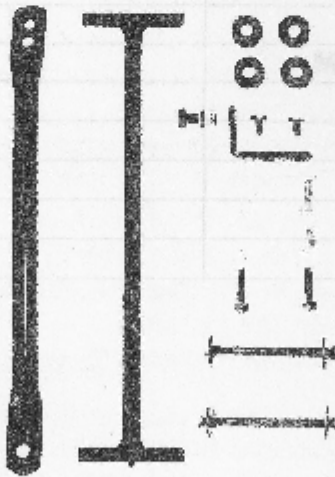
CLUTCH COVER / H.T. COIL



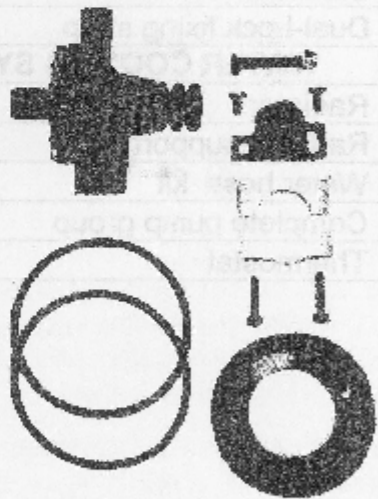
THERMOSTAT



TRYTON HOBBY CARBURETOR



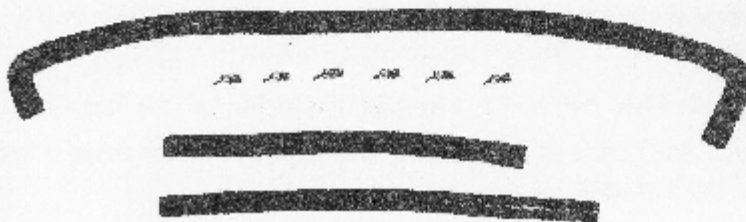
RADIATOR SUPPORT KIT



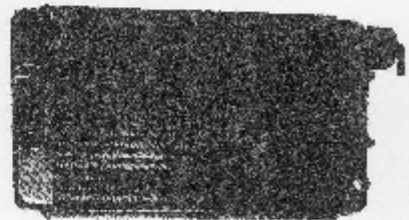
COMPLETE PUMP ASSEMBLY



INTAKE SILENCER



WATER HOSE KIT



RADIATOR